

# another language

performing arts company

Season XXVIII

Volume 10 Issue 3

July-September 2013

## Information

## UP COMING



**XYZ DVD is nearing completion. Support the company and be the first to order Another Language's newest release!**

<http://www.anotherlanguage.org/store/dvd/dvd.html>

Presentations are available!  
For further information go to [www.anotherlanguage.org/education/papers](http://www.anotherlanguage.org/education/papers)  
Contact Another Language to have a representative talk with your organization about scheduling a presentation.

For Information Call: (801) 531-9419  
e-mail: [info@anotherlanguage.org](mailto:info@anotherlanguage.org)  
[www.anotherlanguage.org](http://www.anotherlanguage.org)

## Spotlight



Lucin, Utah

Photograph: Elizabeth Miklavcic

# Ghost Town

**A**nother Language Performing Arts Company is in the initial stages of developing it's newest project, *Ghost Town*. This is the first artistic work, developed by Another Language, that will take place completely online and will be crowd sourced! We are excited to open participation to interested artists and we already have several people who want to participate in *Ghost Town*.

### The Concept

Once bustling historic places, ghost towns are now remnants of bygone eras where change required the inhabitants to leave their dreams behind. Ghost towns are similar to today's digital industry where workers tele-commute from their homes while the office spaces become vacant shells.

## Another Language Board of Directors



### National Advisory Board

#### Charles Amirkhonian

Executive Director  
Other Minds Festival  
San Francisco, CA

#### Jeff Carpenter

Multimedia Specialist, NCSA  
Urbana Champaign, IL

#### Kent Christensen

Artist  
New York, NY

#### Karly Rothenberg

Faculty Member and  
Industry Event Coordinator  
AMD College & Conservator  
Sun Valley, CA

### Utah Advisory Board

#### Pauline Blanchard

The Pauline Blanchard Trust

#### Wayne Bradford

Systems Administrator  
University of Utah

#### Harold Carr

Software Architect  
Oracle Corporation

#### Victoria Rasmussen

Broad Band Computer Professional

### Board of Directors

#### Kathy Valburg

Another Language President  
Ice Skating Director

#### Sylvia Ring

Registered OR Nurse

#### Jan Abramson

University of Utah  
Health Sciences

### Staff

#### Jimmy Miklavcic

Founding Co-Director

#### Elizabeth Miklavcic

Founding Co-Director



Lucin, Utah

Photograph: Elizabeth Miklavcic

Another Language is encouraging investigations of Utah ghost towns. Original photographs, movies, animations, visual art, music, soundscapes, poetry and text compositions submitted by participating artists will be uploaded to [anotherlanguage.org](http://anotherlanguage.org). Correlations between historical ghost towns and modern conceptual ghost towns are encouraged. What is your personal ghost town? What do you see, think, and feel when experiencing a place that was once thriving?

Quick Response (QR) codes corresponding to web content on [www.anotherlanguage.org](http://www.anotherlanguage.org) will be placed at each of the ghost town sites. The viewers can access

#### LUCIN SIGN

When the railroads were first moving across the country, they needed water for their steam engines. The Lucin ponds were developed in the 1800's for this purpose. The water to fill the ponds comes through a pipeline from the Pilot Mountain range, southwest from this location. Since the development of the Lucin cut-off, Lucin has been a homesite for many people and in recent times, a small community of retired people lived here. These retirees once lived here as children and returned as friends in their golden years. Now that the last resident moved away in the early 1990's, their legacy is this quiet spot managed for wildlife.

In 1999, the Utah Division of Wildlife Resources acquired a lease from the Southern Pacific Railroad on Lucin for the benefit of resident and migratory wildlife. Due to the presence of water, Lucin is an "oasis in the desert" and is important for many species of wildlife, particularly songbirds. Songbirds, while on their annual migrations to and from such faraway places as Mexico, South America and Canada, need places to rest, food to eat and water to drink. Here in the middle of the Great Basin Desert, there are not many habitat alternatives for the birds. Lucin provides all these needs becoming an important stop on their annual migrations. Up to 118 species of songbirds may be found here, including other species such as hawks, owls, eagles, antelope, kangaroo rats, deer mice and bats.

the *Ghost Town* experience directly from [anotherlanguage.org](http://anotherlanguage.org) and/or travel to these sites, scan the QR codes with their mobile device, connect to the *Ghost Town* website and access the multimedia content inspired by that location.

Throughout 2014 content will be gathered and the web layout designed. The unveiling will be in 2015 for the Company's 30th anniversary. Interested participants should contact Elizabeth and Jimmy Miklavcic at [info@anotherlanguage.org](mailto:info@anotherlanguage.org) for further information. An artist sign up form will be available early 2014.

# Memberships

## Benefits

FRIENDS	under \$25.00	Membership access to website.
MEMBER	\$25.00-\$49.00	Membership access to website. Newsletter. Choice of one 11x14 original print or one DVD.
CONTRIBUTOR	\$50.00-\$149.00	Membership access to website. Newsletter. Choice of two 11x14 original prints or two DVDs or mix and match.
SPONSOR	\$150.00-\$499.00	Membership access to website. Newsletter. Choice of three 11x14 original prints and one DVD.
PATRON	\$500.00-\$999.00	Membership access to website. Newsletter. Choice of four 11x14 original prints and two DVDs.
BENEFACTOR	\$1,000 or more	Membership access to website. Newsletter. Full set of five 11x14 original prints and all company DVDs.



"May 17, 2013"



"May 24, 2013"



"May 25, 2013"



"June 4, 2013"



"June 17, 2013"

Name: \_\_\_\_\_

Address 1: \_\_\_\_\_

Address 2: \_\_\_\_\_

City: \_\_\_\_\_ State: \_\_\_\_\_ Zip/PostalCode: \_\_\_\_\_

Phone: \_\_\_\_\_ E-mail: \_\_\_\_\_

Pledge amount: \_\_\_\_\_

Thank you for your support!

*Choice of Company DVDs available on Another Language Website.*

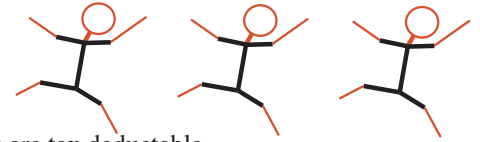
*Another Language is a 501(c)(3) non-profit organization, donations are tax deductible.*

Memberships can be renewed on line at  
<http://www.anotherlanguage.org/sponsors/pledgeform>  
 or  
 Mail:  
**Another Language Performing Arts Company**  
**991 Windsor Street**  
**Salt Lake City, UT 84105-1335**

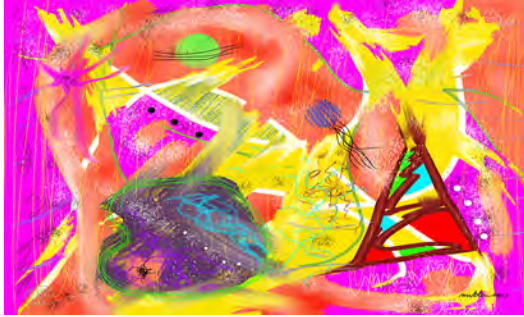




# Newsletter



Another Language is a 501(c)(3) non-profit organization, donations are tax deductible.



**"June 4, 2013" by Elizabeth & Jimmy Miklavcic**

The new membership incentives are collaborative digital paintings by Elizabeth and Jimmy Miklavcic. They were created on an iPad 2 using ArtStudio version 5.13 software. The process, much like finger painting, consists of selecting a digital tool and then using one's finger, drawing directly on the iPad surface. A guideline for their collaborative painting process is that one makes a contribution to the artwork, taking as long as necessary, then the iPad is handed over to the next artist. No matter how much one may want to, no comments or directions are allowed while the artists make their contribution to the composition. In this manner, both artists have complete autonomy in the decision and creative process. The iPad is handed back and forth until both agree that the painting is complete. It is a study in letting go and allowing, moment by moment, the artwork to reveal itself.



Supported by the Utah Division of Arts and Museums, with funding from the State of Utah and the National Endowment for the Arts. Another Language thanks the voters of Salt Lake County for their support of the Zoo, Arts & Parks program.