

another language

performing arts company

Season XXIII

Volume 5 Issue 4

October-December 2008

Information

Presentations are available!
For further information go to
www.anotherlanguage.org/education/papers
Contact Another Language
to have a representative talk with
your organization to schedule a
presentation.

Coming March 2009
InterPlay: AnARTomy
An examination of the human
body revealed through multi
leveled cinematic imagery and
performance!



Jimmy & Beth Miklavcic by Kings College Chapel, Cambridge University, England

*We left the house at 11:00
am on September 12, flew
to Atlanta, had a three hour
layover, and then "over the pond"
to Heathrow, London, arriving at
12:00pm on Saturday September 13.
We stood one hour in customs
- Border Control - then, stood
in line to buy tube tickets from
Heathrow to Kings Cross Station.
Stayed at Kings Cross Station
for one hour and a half while
we activated our train passes and
figured out which train to catch.
Construction on the route to
Royston, then a bus to Cambridge
Train Station, where we took
a taxi that dropped us off at
the wrong location, where we
waited another half hour before*

*catching another taxi that took
us to West Road and the Stephen
Hawking Building where it took us
another half hour to check in at
the Porters Lodge. We took the
lift up in the Stephen Hawking
Building and arrived in our room at
4:30pm on Saturday September 13.*

*Not having eaten since we were
on the plane to London Heathrow
we walked on Queens Road to
Silver Street and found a campus
pub, The Anchor, where we had
Guinness, dinner and watched
the punting boat circus on
the River Cam. Then we made
it back to our room around
6:00pm, collapsed, wonky from
the 7-hour time change, which
changes our internal clock from*

For Information Call: (801) 531-9419
e-mail: info@anotherlanguage.org
www.anotherlanguage.org

Another Language Board of Directors



National Advisory Board

Charles Amirkhanian

Executive Director
Other Minds Festival
San Francisco, CA

Jeff Carpenter

Multimedia Specialist, NCSA
Urbana Champaign, IL

Kent Christensen
Artist

New York, NY

Jennifer Gray

Associate Product Manager
Move, Inc.
Westlake Village, CA

Utah Advisory Board

Pauline Blanchard

The Pauline Blanchard Trust

Wayne Bradford

Systems Administrator
University of Utah

Susan Roberts

Computer Graphics Designer
Spencer S. Eccles
Health Sciences Library

Board of Directors

Kathy Valburg

President
Ice Skating Instructor

Victoria Rasmussen

Vice President
Broad Band Computer Professional

Sylvia Ring

Registered OR Nurse

Jan Abramson

University of Utah
Health Sciences

Staff

Beth Miklavcic

Artistic Director

Jimmy Miklavcic

Executive Director



day to night. It truly was a planes, trains, automobiles and busses adventure to arrive at the Cambridge Campus.

All the traveling effort was to attend the International Digital Resources for the Humanities and Arts Conference September 14-17, 2008 held at the University of Cambridge, England. The conference took place on Cambridge University's Sidwick Site, the home of the humanities facilities on campus.

Mary Jacobus, the DRHA08 Local Committee Chair states, "Cambridge University is an appropriate place to bring DRHA and sow the seeds for new exploration into 'e-Humanities' through discussions around new collaborative electronic environments, collective knowledge, crossing disciplinary boundaries and innovations in the humanities and the arts. The e-Humanities are flourishing as never before, bringing new scholarly communities and knowledge into being."

On September 16, after two wonderful days of attending talks, discussions and performances at the Gonville and Caius College conference location we presented our paper in the West Road Concert Hall, The Poetics of Challenge - Developing Artistic Works in an Emerging Digital Tool Set; an examination of the challenges of telematic performances using examples from our recent performance of InterPlay: Carnivale, held at the University of Utah Intermountain Network and Scientific Computation Center

March 28-30, 2008. The purpose of the presentation was to examine the challenges faced in the project development process and to find solutions for improvements in the creation of network collaborations. The development of the InterPlay performance series began at the Center for High Performance Computing in 1999 and was built upon the Access Grid infrastructure. An emerging first public performance followed in 2003 and continues to date. These network-centric, live performances have created many unique challenges and at present, the challenges have matured and multiplied with each subsequent performance. The developmental process, the issues surmounted and those currently being addressed were discussed in this presentation.

Feedback from audience members included statements such as, "I feel as though I've just watched NASA scientists

at work." Questions regarding the process of using Access Grid Technology were discussed. One attendee asked, "When will it be possible to meet with as many sites as one's system can sustain?" We responded, "Now!"

Attending and speaking at the conference was a wonderful and inspirational experience where motivational exchanges encourage further exploration in real-time, distributed, surrealistic, cinema.

Sincerely,
Beth and Jimmy Miklavcic



Beth & Jimmy Miklavcic Presenting At DRHA 08
Photograph by: Kathleen Richardson

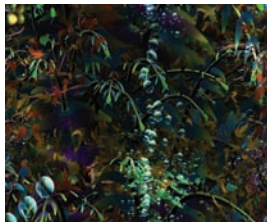
Memberships

Benefits

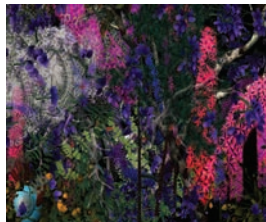
FRIENDS	under \$25.00	Membership access to website.
MEMBER	\$25.00-\$49.00	Membership access to website. 2 ticket vouchers. Newsletter. Choice of one 11x14 original print. 10% off all admission fees and sale items.
CONTRIBUTOR	\$50.00-\$149.00	Membership access to website. 4 ticket vouchers. Newsletter. Choice of two 11x14 original prints. 10% off all admission fees and sale items.
SPONSOR	\$150.00-\$499.00	Membership access to website. 6 ticket vouchers. Newsletter. Choice of three 11x14 original prints. 10% off all admission fees and sale items. Choice of one DVD.
PATRON	\$500.00-\$999.00	Membership access to website. 8 ticket vouchers. Newsletter. Choice of four 11x14 original prints. 10% off all admission fees and sale items. Choice of two DVDs.
BENEFACTOR	\$1,000 or more	Membership access to website. 10 ticket vouchers. Newsletter. Full set of five 11x14 original prints. 10% off all admission fees and sale items. All Company DVDs.



Cracked Rain



Forest Under Water



Forest On Black



Unstill Life



Weep

Name: _____

Address 1: _____

Address 2: _____

City: _____ State: _____ Zip/PostalCode: _____

Phone: _____ E-mail: _____

Pledge amount: _____

Thank you for your support!

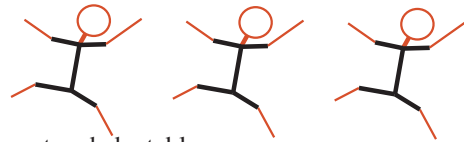
Choice of Company DVDs available on Another Language Website.

Another Language is a 501(c)(3) non-profit organization, donations are tax deductible.

Make checks payable to: **Another Language**
 Mail checks to:
Another Language Performing Arts Company
991 South Windsor Street
Salt Lake City, UT 84105-1335



Sponsors



Another Language is a 501(c)(3) non-profit organization, donations are tax deductible.

Members:

Kathy Chamberlain
Scott Chamberlain
Rindy Engleman
Dave & Mary Hanscom
Eileen Keen
Jody Plant
Suzanne Stensaas
Becky Stout
Kathy & Darrell Valburg
Nicola & Rus Whaley

Contributors:

Jennifer & Kevin Gray
Patricia Green (In Memoria)
Tanya Johnson
Sylvia Ring



Travis Eberhard in
InterPlay: Carnivale

Sponsors:

Pauline Blanchard
Barbara & Dave Chamberlain
Lynn Decker
Victoria Rasmussen
Manners/Golden Rule Foundation



Another Language received a Readers
Choice Award for Best Opera/Symphony
Performance by Travis Eberhard &
Artemio Contreras in *InterPlay: Carnivale*



“Supported by the Utah Arts Council, with funding from the State of Utah and the National Endowment for the Arts, which believes that a great nation deserves great art.”